

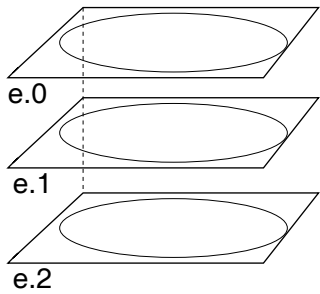
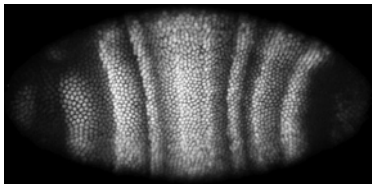
# Flipping Embryos into a Common Orientation

(Same embryo is shown in all three possible orientations that should be corrected)

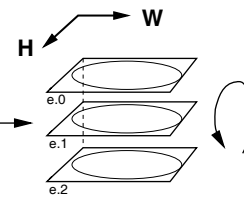
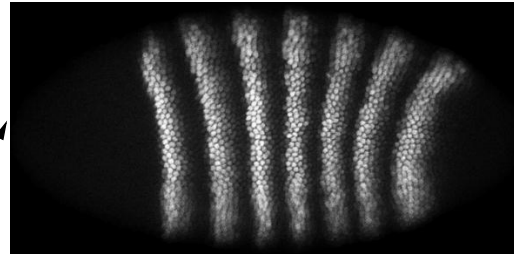
An image of the "eve" channel is displayed, so the user can decide how to flip the embryo KDF into the canonical Drosophila embryo orientation: anterior to the left and dorsal to the top.

## Input:

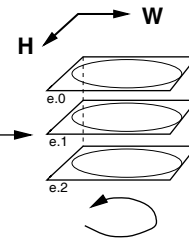
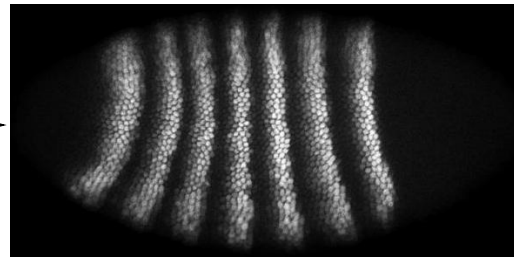
3-Element  
Embryo KDF File,  
Rotated and Cropped



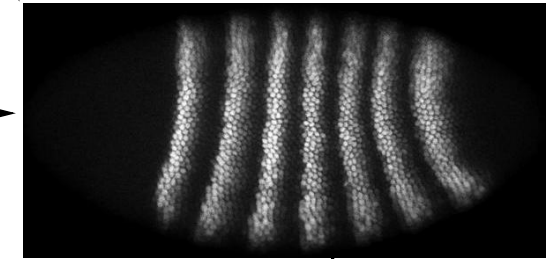
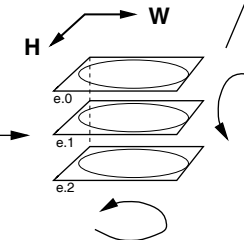
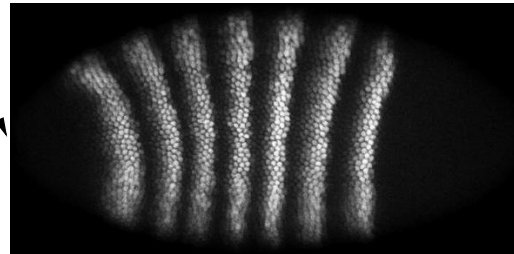
Case 1: Upside Down, Flip along height axis



Case 2: Backwards, Flip along width axis



Case 3: Upside Down and Backwards,  
Flip along both height and width axes



## Output:

Flipped 3-channel Embryo KDF File

