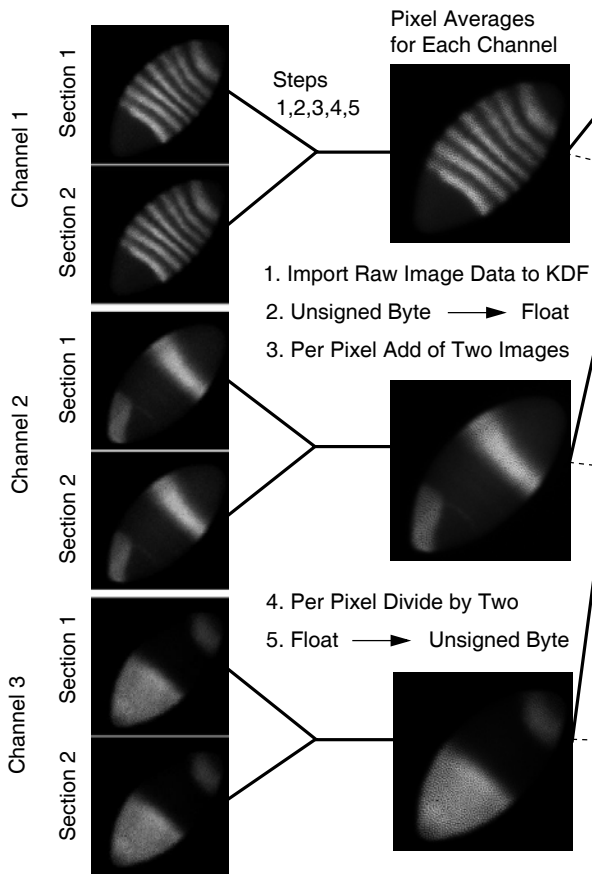
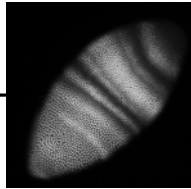


### Input:

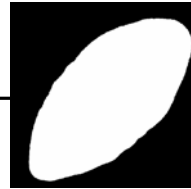
Six 1024x1024 Images from the Confocal



### 3-Channel Max



### Whole Embryo Mask



Steps 7,8,9,10

Step 6

6. Compare Value from each Channel at each Pixel and Output the Highest, Yielding the Three-Channel Pixel Maximum

7. Threshold at Value 5

8. Median Filter (Histogram)

9. N-Dilation (N=5)

10. N-Erosion (N=5)

11. Append along Elements Axis

12. Pad Data Structure to 1400x1400 (175 Offset)

13. Export New KDF File

### Output:

4-Element KDF File: Images are organized along canonical Khoros data axes

